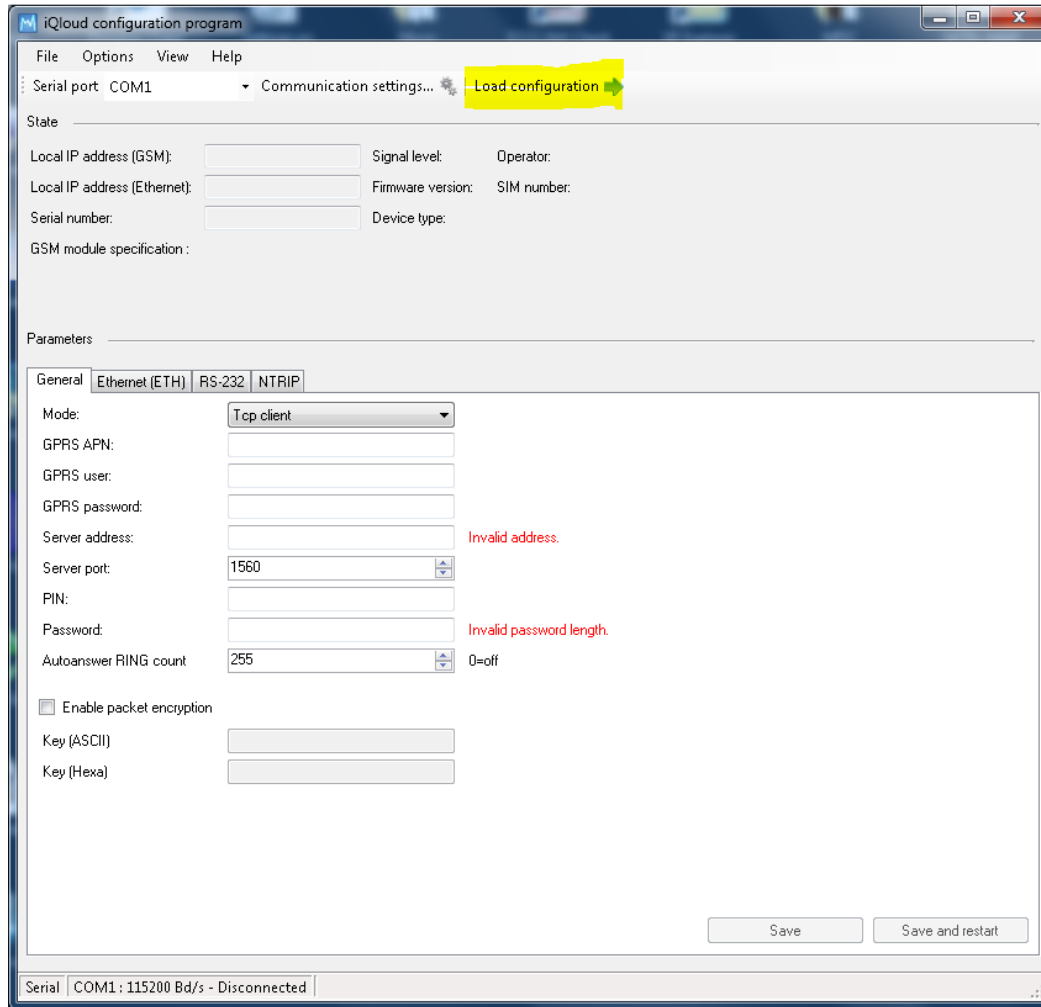


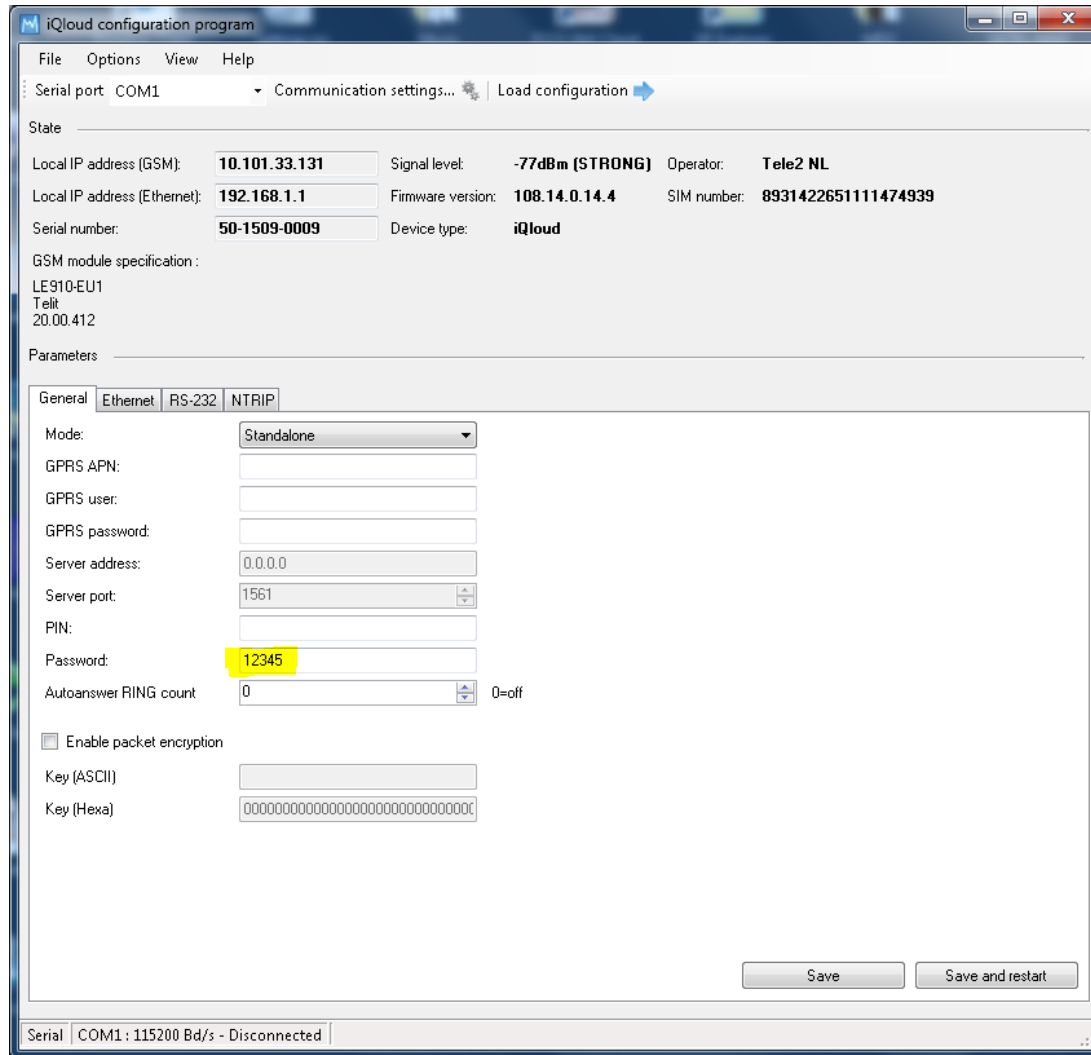
Quick Guide Configuration iQloud 4G NTRIP Router (version V1.0)

- Install iQloud Configuration software
- Install SIM card (auto-detect provider settings, attention: orientation!)
- Connect USB-Serial adapter to PC (not supplied)
- Connect adapter via null-modem cable to iQloud router
- Connect 4G antenna to iQloud Router (SMA connector)
- Connect power supply cable to “PWR” +/- terminals
- Power up the iQloud Router
- Start iQloud Configuration software

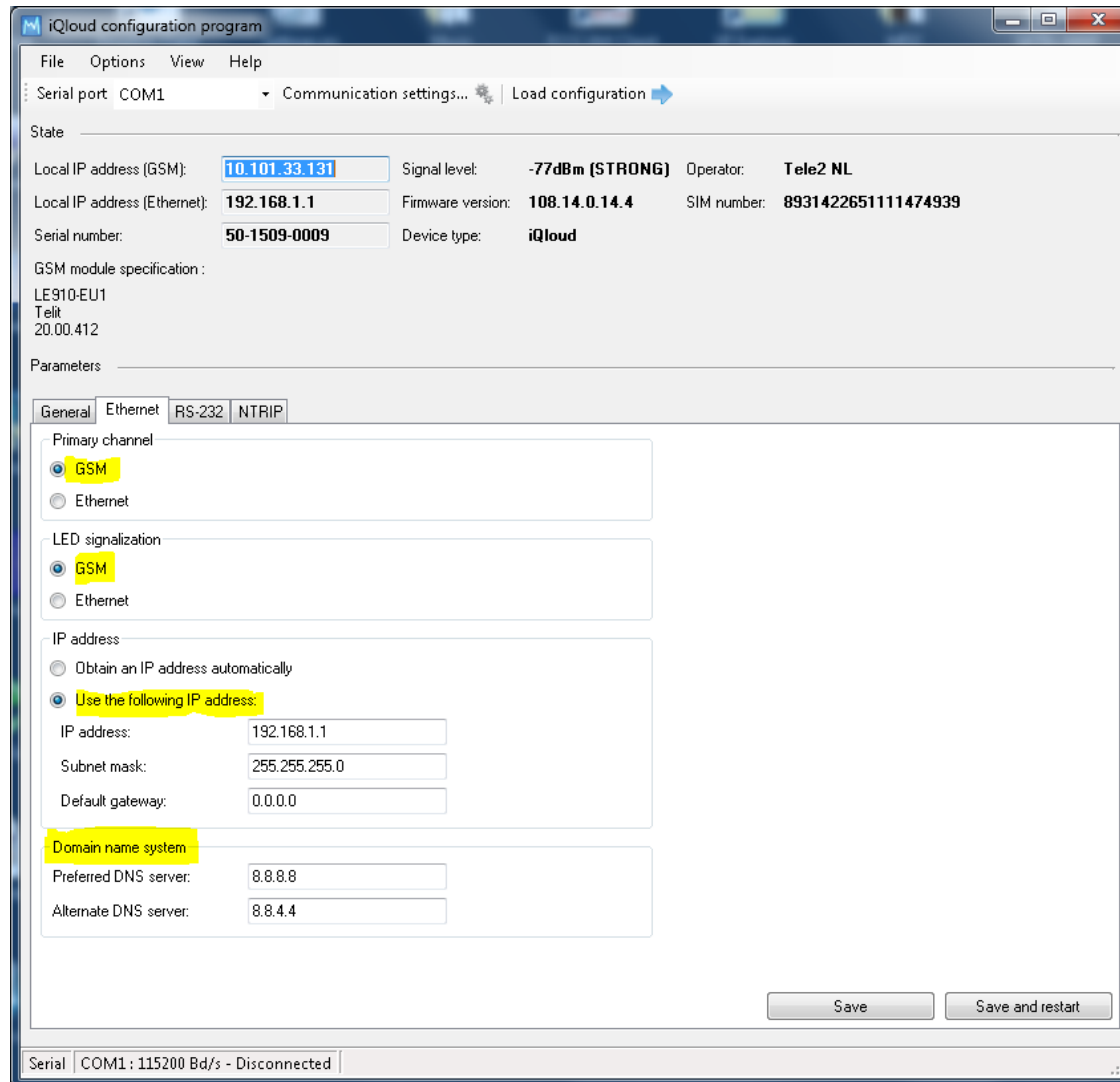
Following screen will show up >>



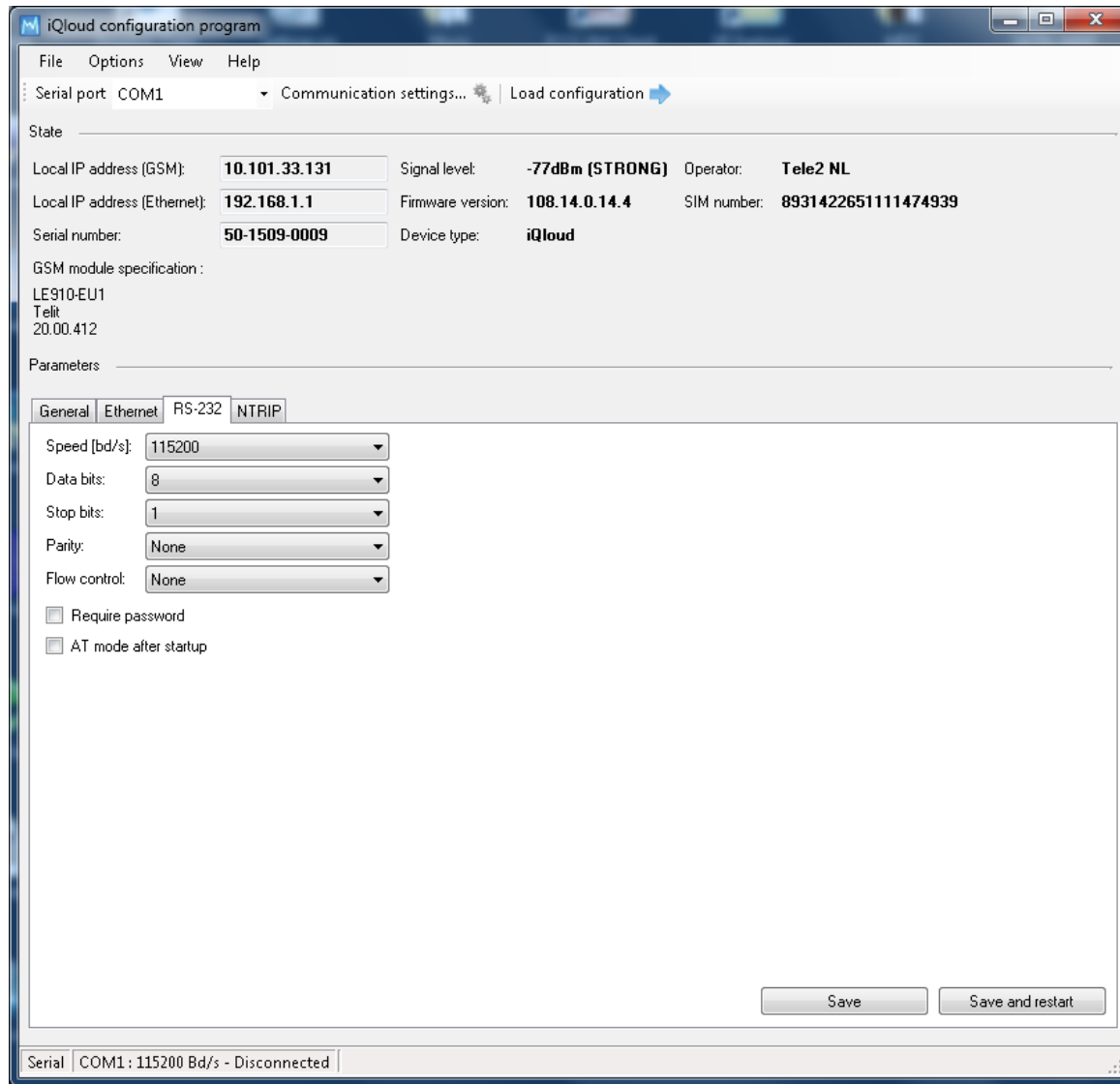
Press “load configuration” (default serial speed is 115 Kb/s
Configuration parameters are imported in Configuration Program >>



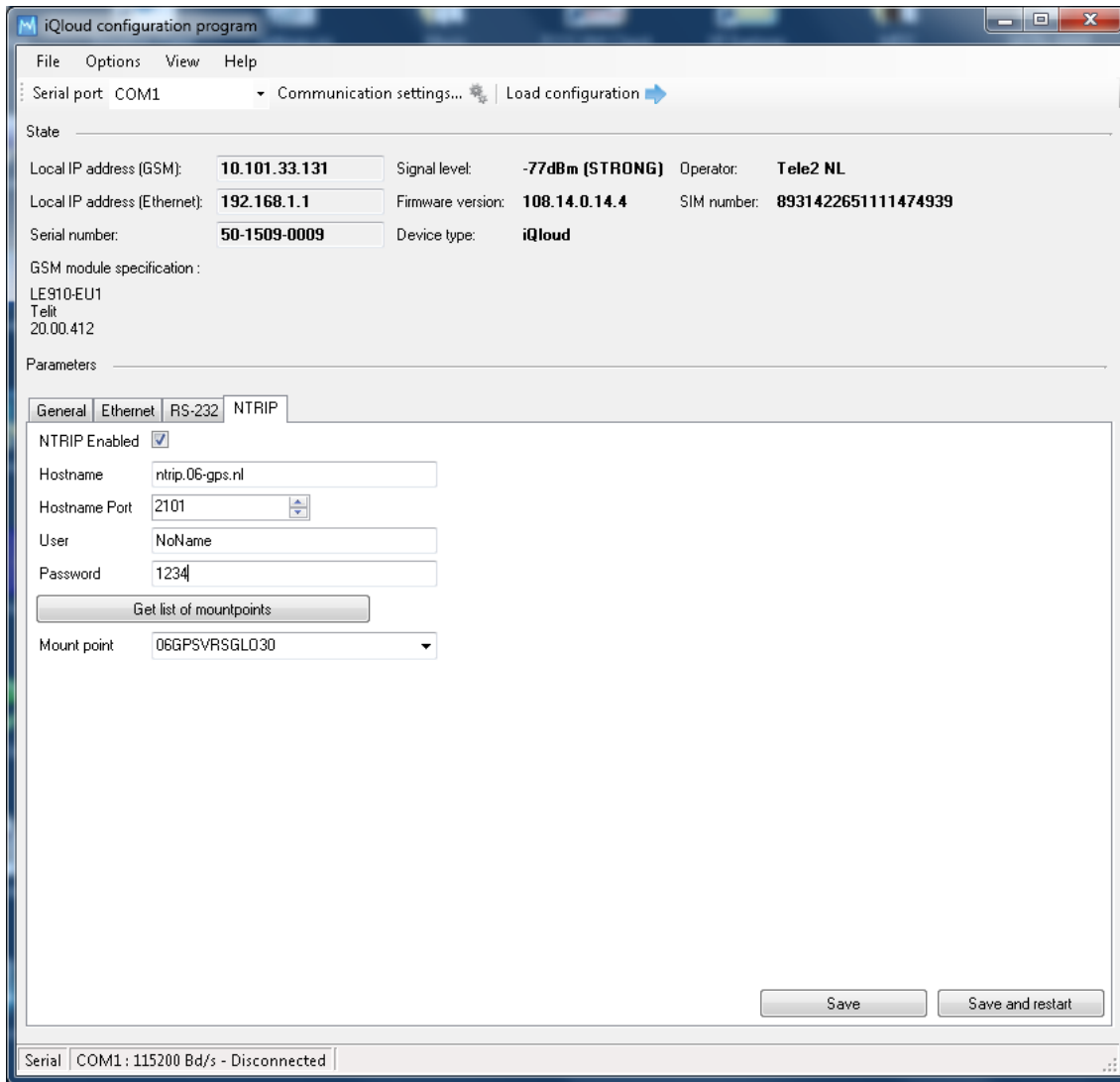
- Upper part of screen shows device and status info
- If applicable enter PIN of the SIM card
- Enter password “12345” and press “save”
- Press tab “Ethernet” >>



- Enter info as marked (other static IP-address free selectable)
- Press “Save” >>



- Enter serial parameters of serial NMEA output of GNSS receiver
- Press “Save” >>
 (“communication settings” of Configuration Program will be updated automatically)

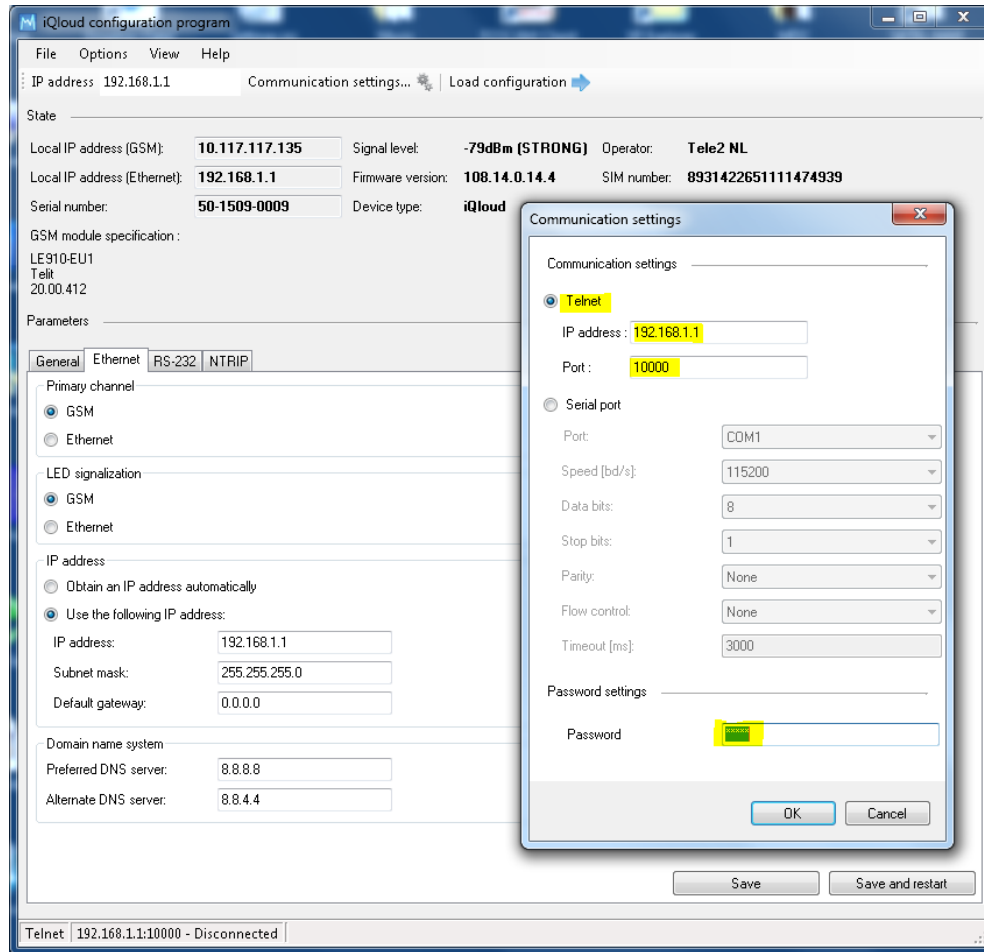


- Enter NTRIP parameters and credentials (Hostname can be URL of IP-address)
- Press “Save”
- Press “Get list of mountpoints” and select mountpoint in drop-down menu
- Press “Save” again (mountpoint is saved and activated)

- Configuration procedure completed!
- NTRIP corrections should be received now
- Rx/Tx LED's of serial-USB should show activity now
- Internet connectivity for device with static address in range of iQloud IP-address (ethernet cable connected between iQloud and PC)
Remark: during "heavy traffic" correction age can increase a few seconds

Furthermore:

- Configuration program can communicate to iQloud with Telnet
- Change "Communication settings" as follows >>



- end -